

MOTOROLA Chassis HS-1260, HS-1323

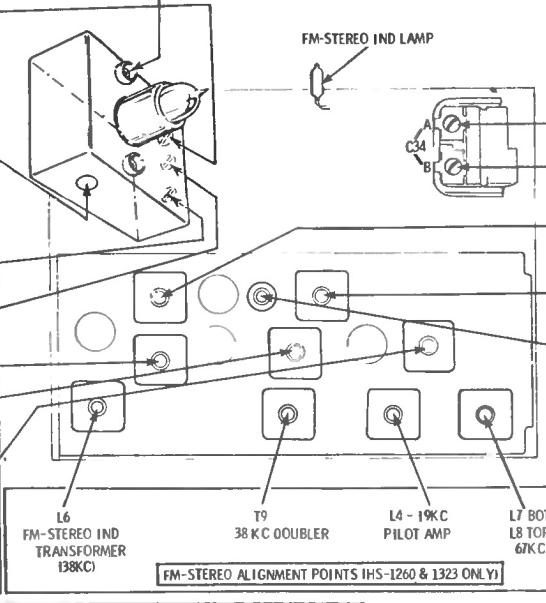
FM ALIGNMENT POINTS

- L2 - FM OSC CORE 87.5MC
- C1C - FM OSC TRIM 108.5MC
- T2 - FM IF 98MC
- C1A - FM ANT TRIM 98MC
- C1B - FM RF TRIM 98MC
- T4 - FM IF 10.7MC
- T5 - FM IF 10.7MC
- T6 - BOT CORE FM IF 10.7MC
-TOP CORE FM RATIO DET 10.7 MC

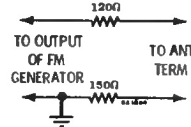
FM-STEREO IND LAMP

AM ALIGNMENT POINTS

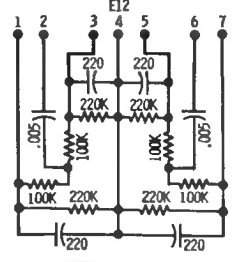
- AM OSC TRIM 1620 KC
- AM ANT TRIM 1400 KC
- T7 - AM IF 455KC (TOP & BOT)
- T8 - AM IF 455KC (TOP & BOT)
- L10 - AM OSC CORE 532 KC



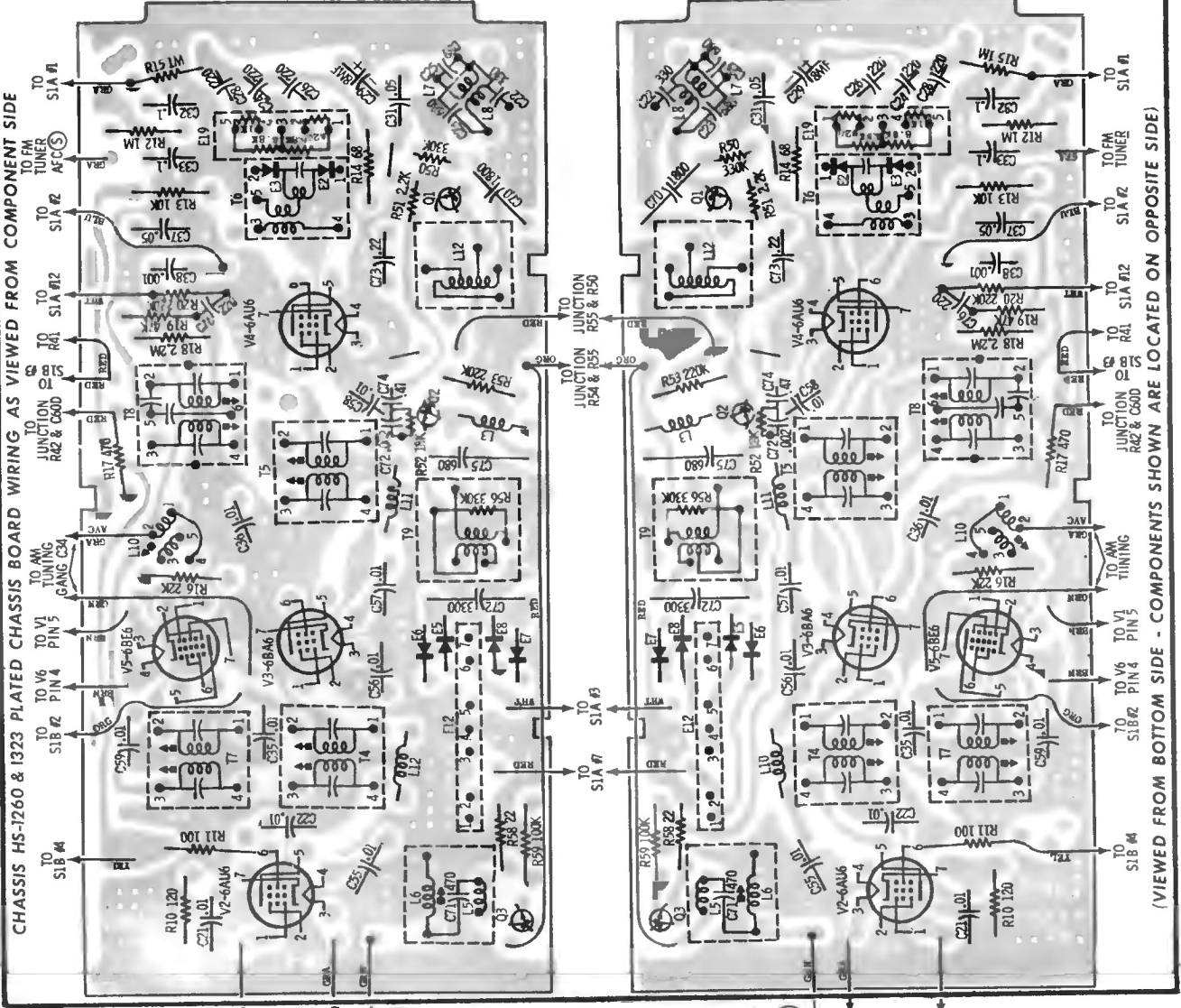
FM-STEREO ALIGNMENT POINTS (HS-1260 & 1323 ONLY)



FM GENERATOR TERMINATION DETAIL



TOP VIEW



CHASSIS HS-1260 & 1323 PLATED CHASSIS BOARD WIRING AS VIEWED FROM COMPONENT SIDE

BOTTOM VIEW

(VIEWED FROM BOTTOM SIDE - COMPONENTS SHOWN ARE LOCATED ON OPPOSITE SIDE)

